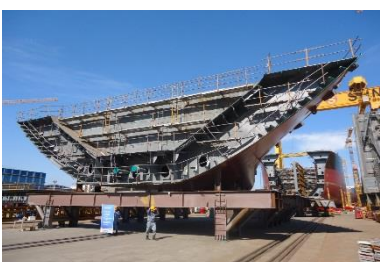
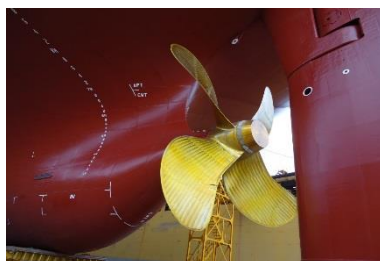




SMC SCHULTE
MARINE CONCEPT

Newbuilding & Conversion



Who we are

- **Schulte Marine Concept (SMC)** is the project focused business unit within the **Schulte Group**, providing a comprehensive range of technical consultancy and project management services as well as value-added solutions for newbuilding, conversion and retrofit projects, and technical support for fleet in service.
- SMC's expertise in shipbuilding and BSM's experience in shipmanagement provides an integrated 'end-to-end' service from newbuilding through to vessel delivery and full management.
- Headquartered in Shanghai, China, SMC operates through regional offices in S.Korea, India, Türkiye and project-specific site offices spread throughout global key ship building markets.

Our services

- **Newbuilding and conversion projects**
 - Project management
 - Design consultancy
 - Yard selection, audit, gap analyses
 - Contract review and negotiations
 - Plan approval
 - Site supervision
 - Pre-purchase inspections
 - Provision of supervisors
- **Fleet in service support**
 - Dry-docking support
 - Retrofit projects
 - Conversion projects
 - Major repairs management and supervision
 - Damage surveys
 - Ballast Water Treatment System retrofits
 - Scrubber retrofits

Our experience

	Vessel Type	Completed Projects	Current Projects
1	Container + MPV / Heavy lift	194 + 22 vessels	32 + 15 vessels
2	bulk carrier, VLOC, self-unloading vessel	137 + 47 + 4 vessels	68 vessels
3	crude oil / chemical / product tanker / VLCC	109 vessels	11 vessels
4	LNG / LEG / LPG / VLGC / NH ₃ carrier	23 + 24 + 23 + 1 vessels	30 + 1 vessels
5	LNG bunkering vessel	4 vessels	7 vessels
6	FSRU		1 unit
7	FPSO	1 unit	
8	crew boat/crew transfer vessel	3 vessels	
9	OSV / PSV / AHT / offshore maintenance vessel / DSV / FSV / SOV / WTIV / MPV barge / Self-elevating platform	15 vessels	11 vessels
10	floating offshore transshipping platform	1 unit	
11	pipe laying barge	1 unit	
12	multipurpose trenching & cable laying vessel	1 vessel	
13	floating dry dock	5 units	2 units
14	car-passenger ferry / Ro-pax / Ro-Ro / arctic expedition cruise vessel / rail car carrier / accommodation offshore vessel	13 vessels	7 vessels
15	PCTC		7 vessels
16	speed boat		8 vessels
	Total:	628 vessels	200 vessels
	Total:		828 vessels

Shipyards: China, Japan, Korea, India, Philippines, Taiwan, Europe, Thailand.

Contact

SOUTH KOREA	HONG KONG	CHINA (Head Office)	INDIA	TÜRKIYE	CYPRUS
Management: management@schultemarineconcept.com					
Mr. Krzysztof Kozdron Managing Director k.kozdron@schultemarineconcept.com		Ms. Dongqing He Commercial Director dongqing.he@schultemarineconcept.com		Mr. Moka Adinarayana Technical Director a.moka@schultemarineconcept.com	
Marketing and Business Development: business@schultemarineconcept.com					
Ms. Hebe Hou Customer Relationship Manager Email: hebe.hou@schultemarineconcept.com					