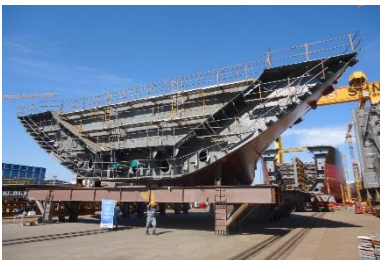
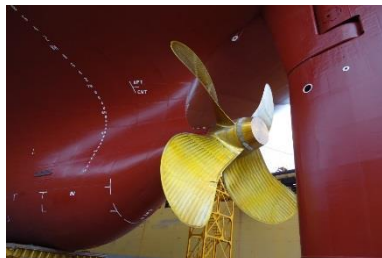
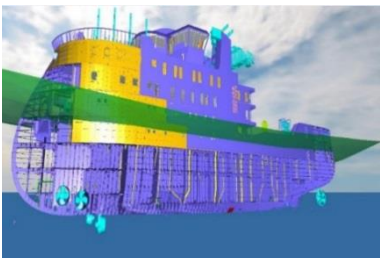


Newbuilding & Conversion

From concept to delivery and beyond



Who we are

Schulte Marine Concept (SMC) is the project focused business within **Bernhard Schulte Shipmanagement (BSM)**, providing a comprehensive range of tailored technical consultancy and project management services as well as value-added solutions for newbuilding, conversion and retrofit projects, and technical support for fleet in service.

SMC's expertise in shipbuilding and BSM's experience in shipmanagement provides an integrated 'end-to-end' service from newbuilding through to vessel delivery and full management. Headquartered in Shanghai, China, SMC operates through regional offices in Hong Kong and project-specific site offices spread throughout global key ship building markets.

Our services
Newbuilding and conversion projects

- Project management
- Design consultancy
- Yard selection, audit, gap analyses
- Contract review and negotiation
- Plan approval and Makers selection
- Site supervision
- Pre-purchase inspections
- Provision of supervisors

Fleet in service support

- Dry-docking support
- Retrofit projects
- Conversion projects
- Major repairs management and supervision
- Damage survey
- Ballast Water Treatment System retrofit
- Scrubber retrofit

Our experience

	Vessel Type	Completed Projects	Current Projects
1	container	164 vessels	14 vessels
2	MPV/ heavy lift vessel	14 + 2 vessels	
3	bulk carrier, VLOC	80 + 32 vessels	37 + 10 vessels
4	self-unloading vessel	4 vessels	
5	crude oil/ chemical/ product tanker/VLCC	75 vessels	10 vessels
6	LNG LEG/ LPG/ NH ₃ carrier	8 + 22 + 24 vessels	1 vessel
7	gas supply vessel	1 vessel	2 vessels
8	FPSO		1 unit
9	OSV/ PSV/ AHT/ maintenance vessel/ wind farm maintenance vessel/ DSV	9 + 2 + 2 vessels	2 vessels
10	floating offshore transshipping platform	1 unit	
11	Conversion: VLCC-VLOC, container-grain carrier, cable laying vessel	7 vessels	
12	pipe laying barge	1 unit	
13	offshore accommodation vessel	2 units	
14	floating dry dock	4 units	
15	car/passenger ferry / Ro-pax / expedition vessel / rail car carrier		7 vessels
	Total:	454 vessels	84 vessels
	Total:		538 vessels

Shipyards: China, Japan, Korea, India, Philippines, Taiwan, Europe

Contact

CHINA Head Office	HONG KONG
3F Block No.7 1690, Cai Lun Road, Zhang Jiang, Pu Dong, Shanghai, 201203 China	2602, K Wah Centre, 191 Java Road, North Point Hong Kong
Tel: +86-21-5027-6077	Tel: +852-2597-1345
e-mail: management@schultemarineconcept.com web: www.schultemarineconcept.com	